



SmartExcel4TFS Installation Guide



INTRODUCTION

This Installation Guide elaborates the installation of SmartExcel4TFS using detailed steps. The guide is divided into the following two sections:

1. System Requirements
2. Installing SmartExcel4TFS

The first section deals with what a user would require for installing the SmartExcel4TFS application and the second section elaborates the actual installation procedure.

SYSTEM REQUIREMENTS

SOFTWARE REQUIREMENTS

1. Windows 10, Windows 8.1, Windows 8, Windows 7 (x86, x64)
2. SmartExcel4TFS™ requires prior installation of following applications/frameworks.
 - Microsoft Excel
 - 2010
 - 2013
 - 2016
 - Excel 365 ProPlus

Both 32-bit and 64-bit versions of all above mentioned applications/frameworks are supported (where applicable)

- Microsoft .Net Framework 4.5
- Microsoft Visual Studio Tools for Office Runtime (VSTO)
- Team Explorer
 - Team Explorer 2015
Or
 - Team Explorer 2013 with Update 4 must be installed
Or
 - Team Explorer 2012 with Update 4 must be installed
Or
 - Team Explorer 2010 with Service Pack 1 must be installed
- Internet Explorer 9 or higher

Both 32-bit and 64-bit versions of all above mentioned applications/frameworks are supported (where applicable)

*SmartExcel4TFS does not support Microsoft Excel 2007 or earlier versions

*It is highly recommended to use same or higher version of Team Explorer/Visual Studio as of Team Foundation Server. SmartOffice4TFS doesn't support "standalone TFS client for 2013" or Team Explorer

HARDWARE REQUIREMENTS

1. RAM: At least 4GB (higher required if executing TFS Work Item queries greater than 100,000).

Hard Drive Space: 500 MB for SmartExcel4TFS only. This does not include Hard Drive space required for pre-requisite software. Refer to concerned manuals for relevant requirement

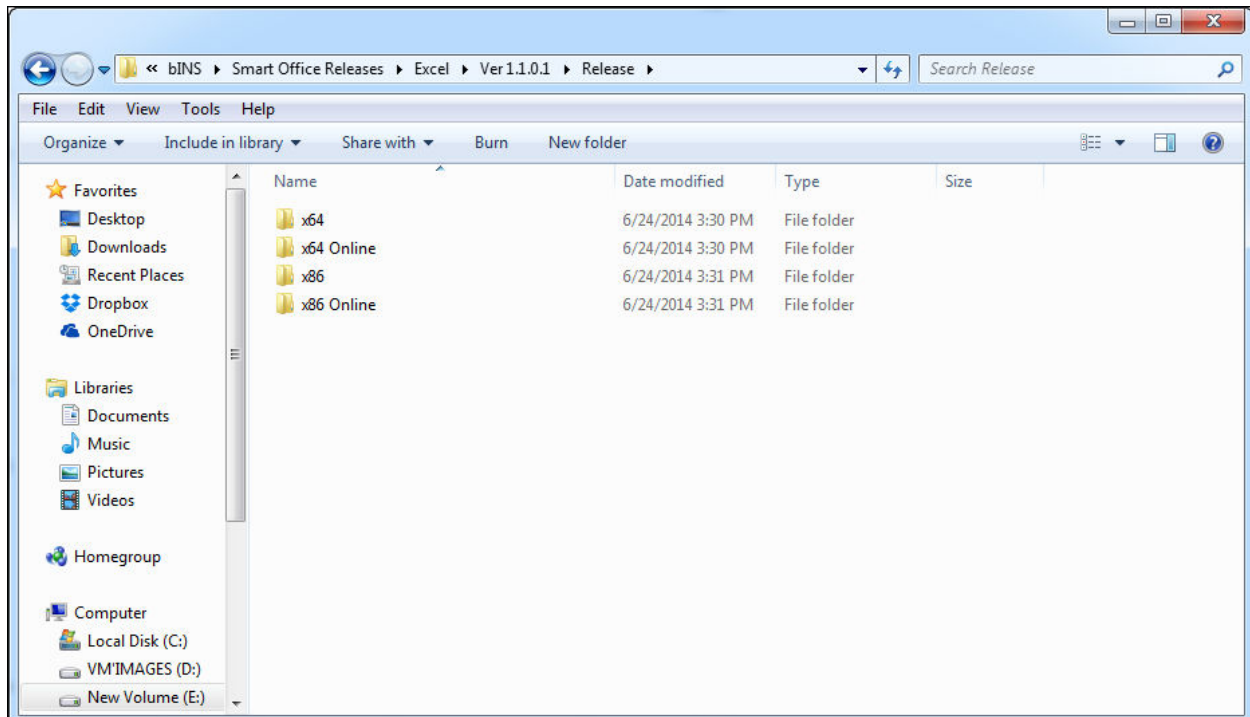
INSTALLING SMARTEXCEL4TFS

INSTALLATION GUIDELINES

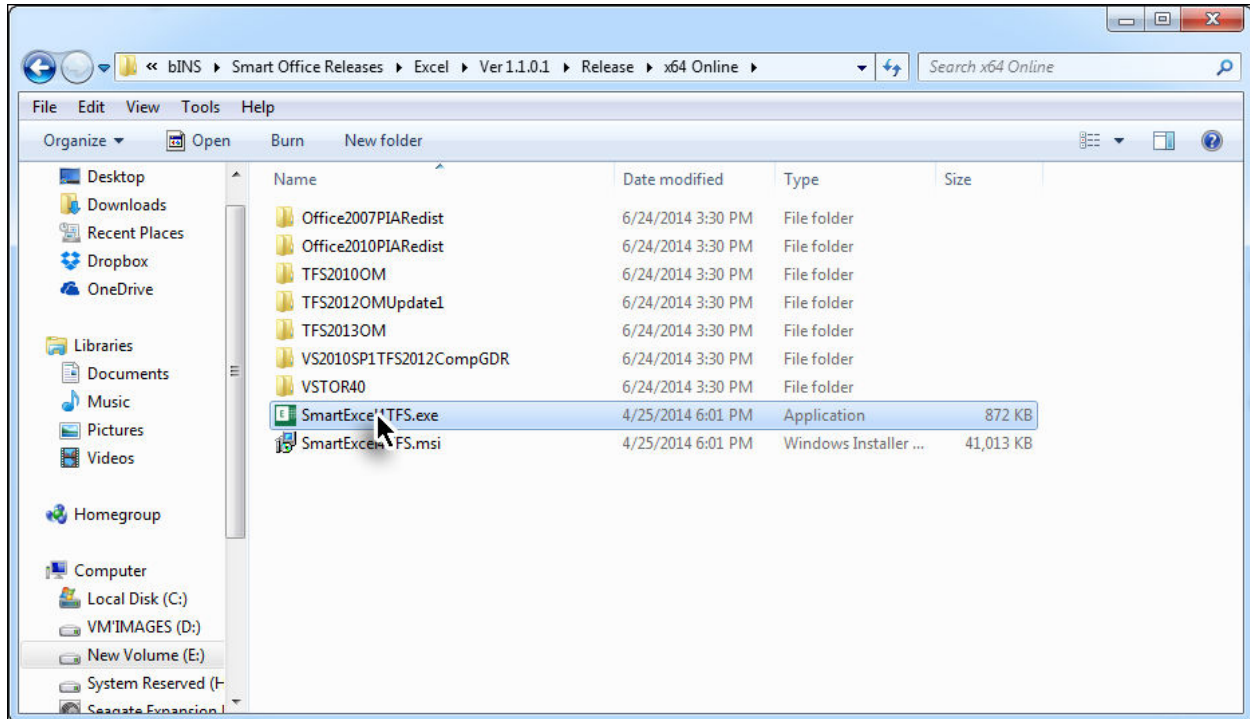
- The Installation files are provided to the users either in 32-bit (x86) or 64-bit (x64) versions depending upon their version of Microsoft Excel installed (i.e. x86 or x64).
- A 32bit (x86) version of SmartExcel4TFS cannot be installed on a machine with Microsoft Excel 64bit (x64) installed on it and vice versa.
- Most of the pre-requisite software tools (Office Interop Assemblies, VSTO and TFS Object Models) are also provided with to the users, in case they do not have them installed on their machines. However User has to get Microsoft Windows and Microsoft Excel on his own.
- It's better to install the pre-requisite software tools before commencing the installation of SmartExcel4TFS, however in case they are not installed, the installer for SmartExcel4TFS automatically installs these tools before starting the installation of SmartExcel4TFS itself.

INSTALLATION PROCESS

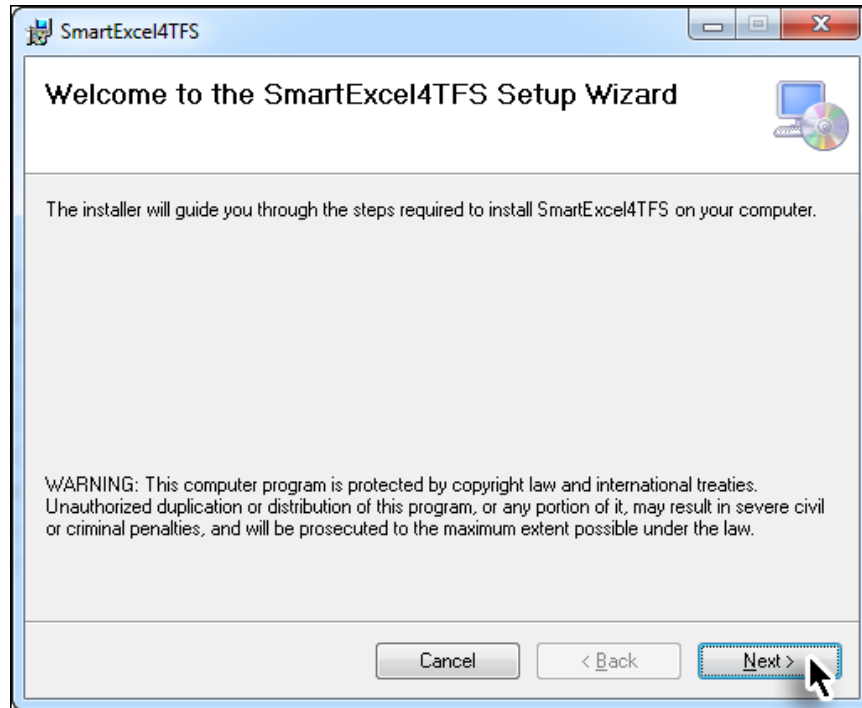
1. Navigate to the desired folder (x86 or x64) for relevant type of installation.



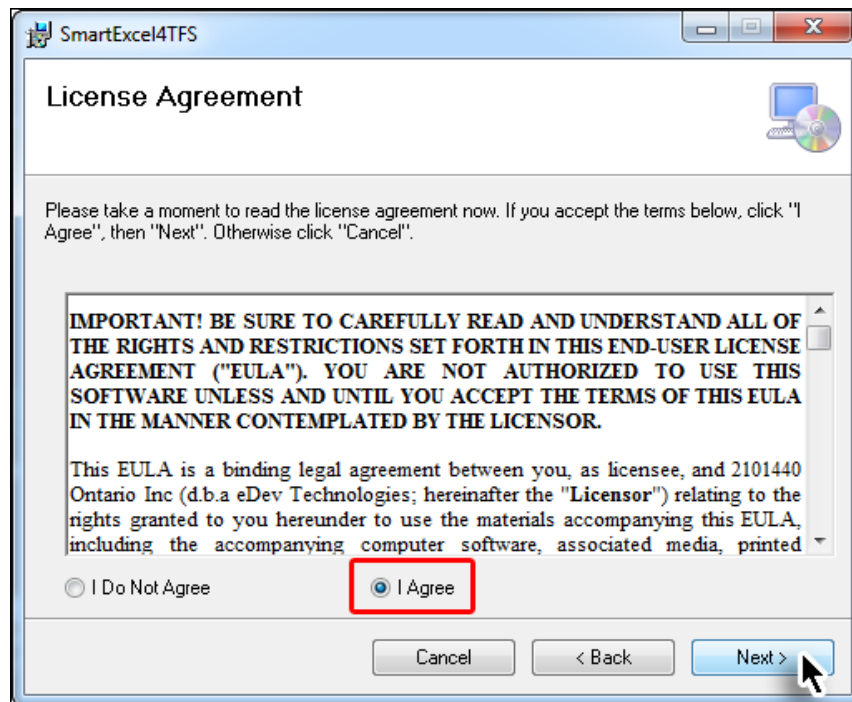
2. Run the **SmartExcel4TFS.exe** file.



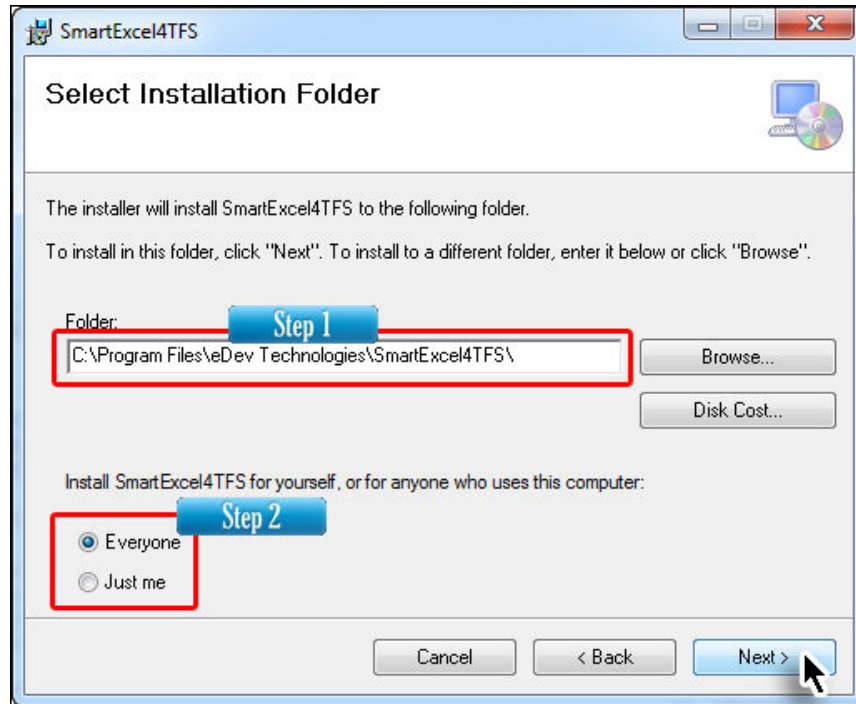
3. Click the Next Button to start the installation process.



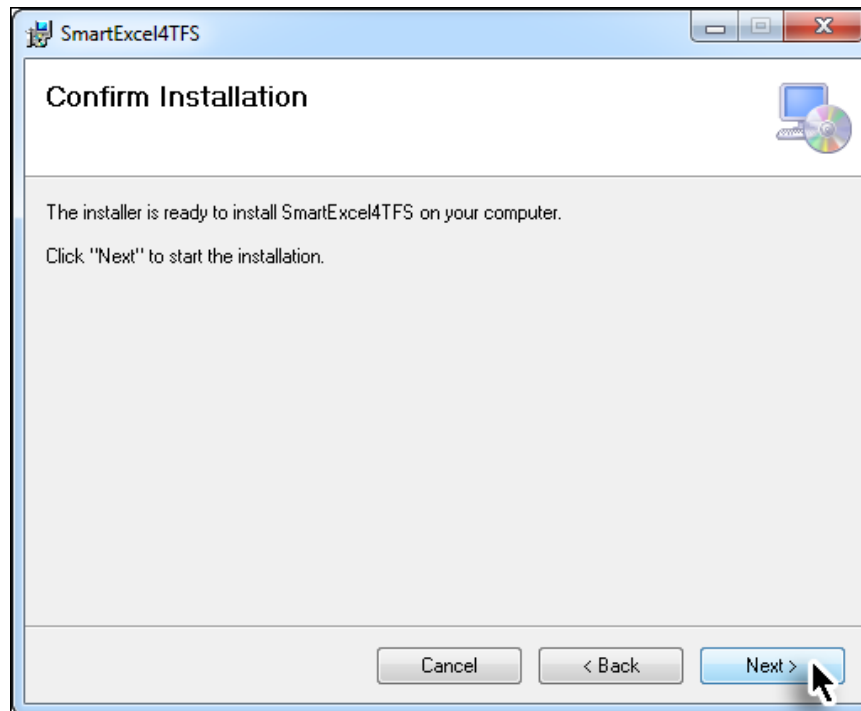
4. Read the License Agreement, select **I Agree** option and click the **Next** Button.



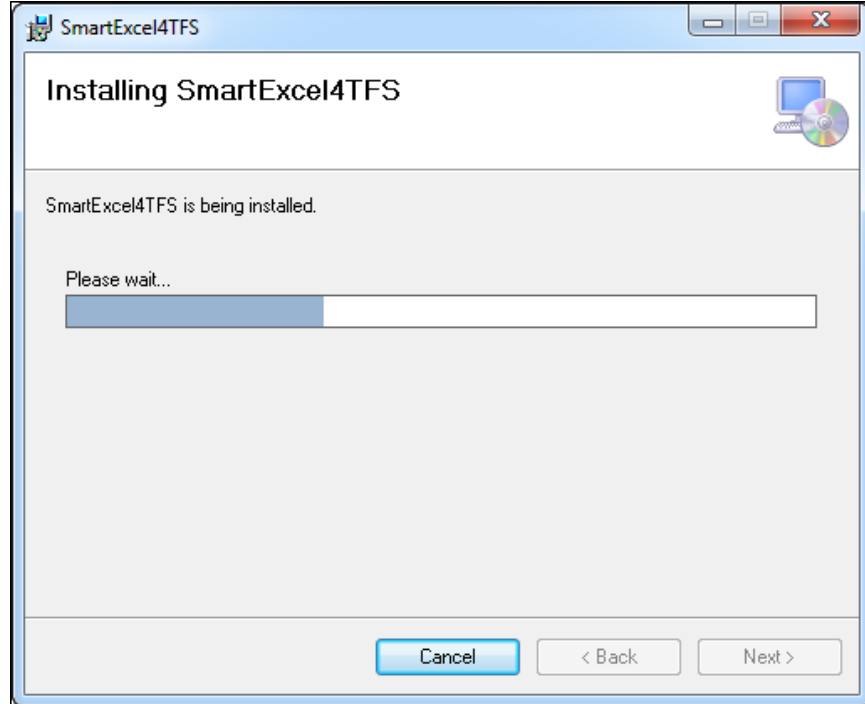
5. Set the desired installation location and the relevant user accounts then click the **Next** Button.



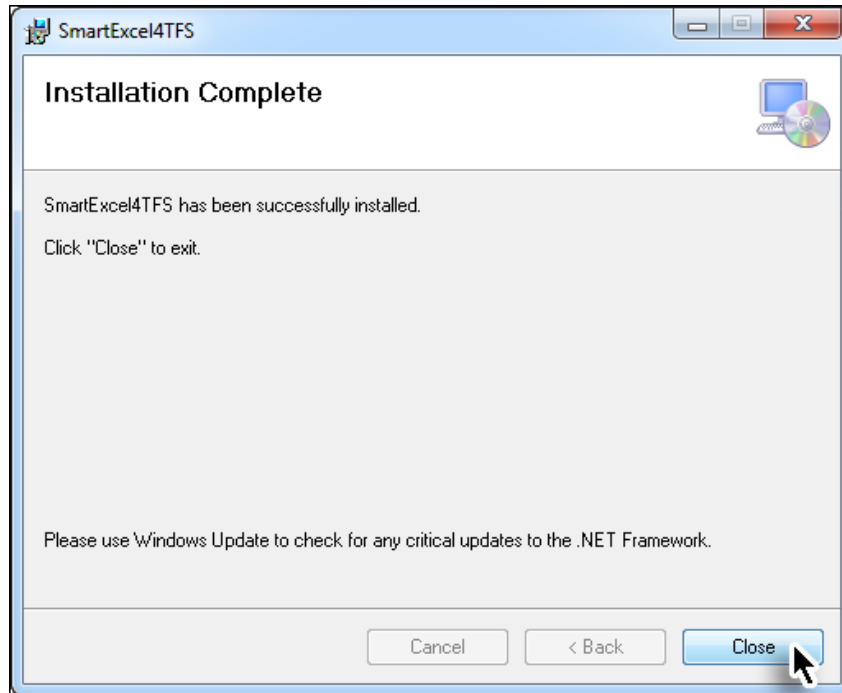
6. Click the **Next** Button to begin the copying of files on your system.



The actual installation starts based on selections done in previous steps.



7. Click on the **Close** Button to complete the installation process.



The **SmartExcel4TFS** Tab can now be accessed in Microsoft Excel.

