



## SmartOutlook4TFS Installation Guide



## TABLE OF CONTENTS

Introduction.....	2
System Requirements.....	2
Software Requirements.....	2
Supported Team Foundation Server.....	3
Supported Team Foundation Server Languages.....	3
Hardware Requirements .....	3
Installing SmartOutlook4TFS .....	4
Installation Guidelines .....	4
Installation Process.....	4

## INTRODUCTION

This Installation Guide elaborates the installation of SmartOutlook4TFS using detailed steps. The guide is divided into the following two sections:

1. System Requirements
2. Installing SmartOutlook4TFS

The first section deals with what a user would require for installing the SmartOutlook4TFS application and the second section elaborates the actual installation procedure.

## SYSTEM REQUIREMENTS

### SOFTWARE REQUIREMENTS

1. Windows 10, Windows 8.1, Windows 8, Windows 7 (x86, x64)
2. SmartOutlook4TFS™ requires prior installation of following applications/frameworks.
  - Microsoft Outlook
    - 2010
    - 2013
    - 2016
    - Outlook 365 ProPlus

Both 32-bit and 64-bit versions of all above mentioned applications/frameworks are supported (where applicable)

- Microsoft .Net Framework 4.5
- Microsoft Visual Studio Tools for Office Runtime (VSTO)
- Team Explorer
  - Visual Studio 2017, Team Explorer 2017  
Or
  - Visual Studio 2015, Team Explorer 2015  
Or
  - Team Explorer 2013 with Update 4 must be installed  
Or
  - Team Explorer 2012 with Update 4 must be installed  
Or
  - Team Explorer 2010 with Service Pack 1 must be installed
- Internet Explorer 9 or higher

Both 32-bit and 64-bit versions of all above mentioned applications/frameworks are supported (where applicable)

\* SmartOutlook4TFS does not support Microsoft Outlook 2007 or earlier versions

\* It is highly recommended to use same or higher version of Team Explorer/Visual Studio as of Team Foundation Server. SmartOffice4TFS doesn't support "standalone TFS client for 2013" or Team Explorer

## SUPPORTED TEAM FOUNDATION SERVER

1. VSTS - Visual Studio Online
2. TFS 2017
3. TFS 2015
4. TFS 2013
5. TFS 2012
6. TFS 2010

## SUPPORTED TEAM FOUNDATION SERVER LANGUAGES

1. English
2. Chinese
3. Deutsch (German)
4. French

## HARDWARE REQUIREMENTS

1. RAM: At least 4GB (higher required if executing TFS Work Item queries greater than 100,000).

Hard Drive Space: 500 MB for SmartOutlook4TFS only. This does not include Hard Drive space required for pre-requisite software. Refer to concerned manuals for relevant requirement

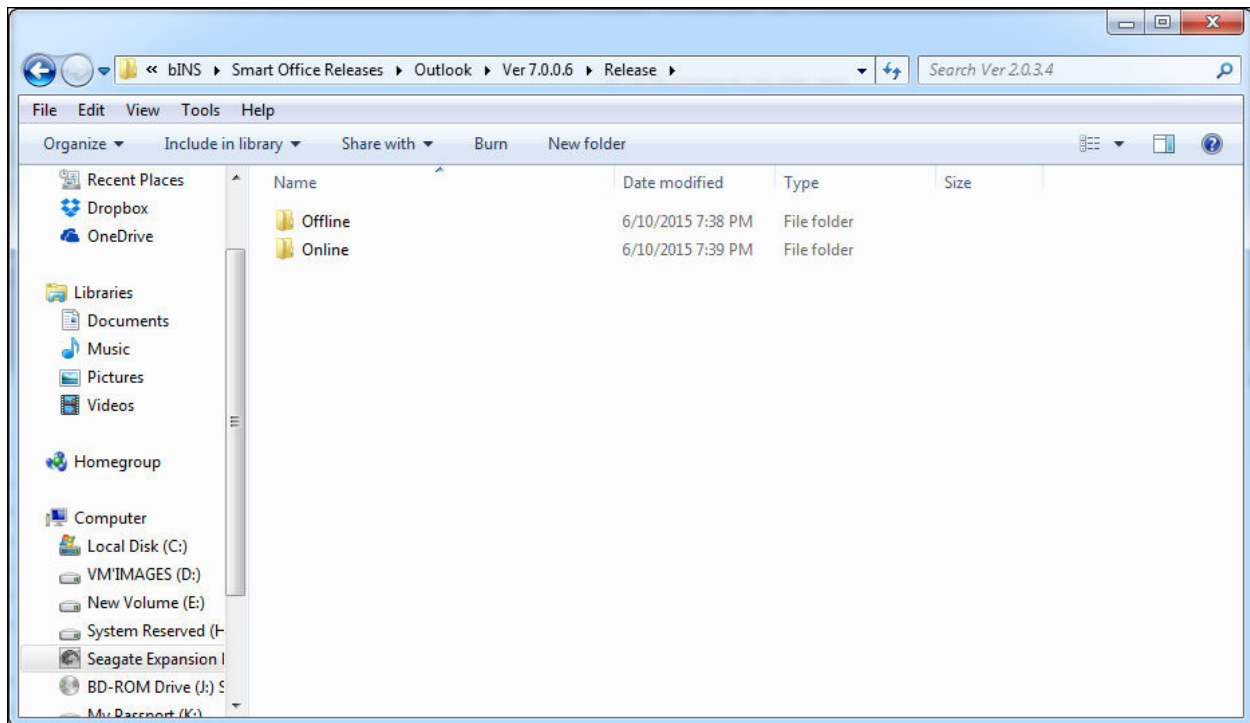
## INSTALLING SMARTOUTLOOK4TFS

### INSTALLATION GUIDELINES

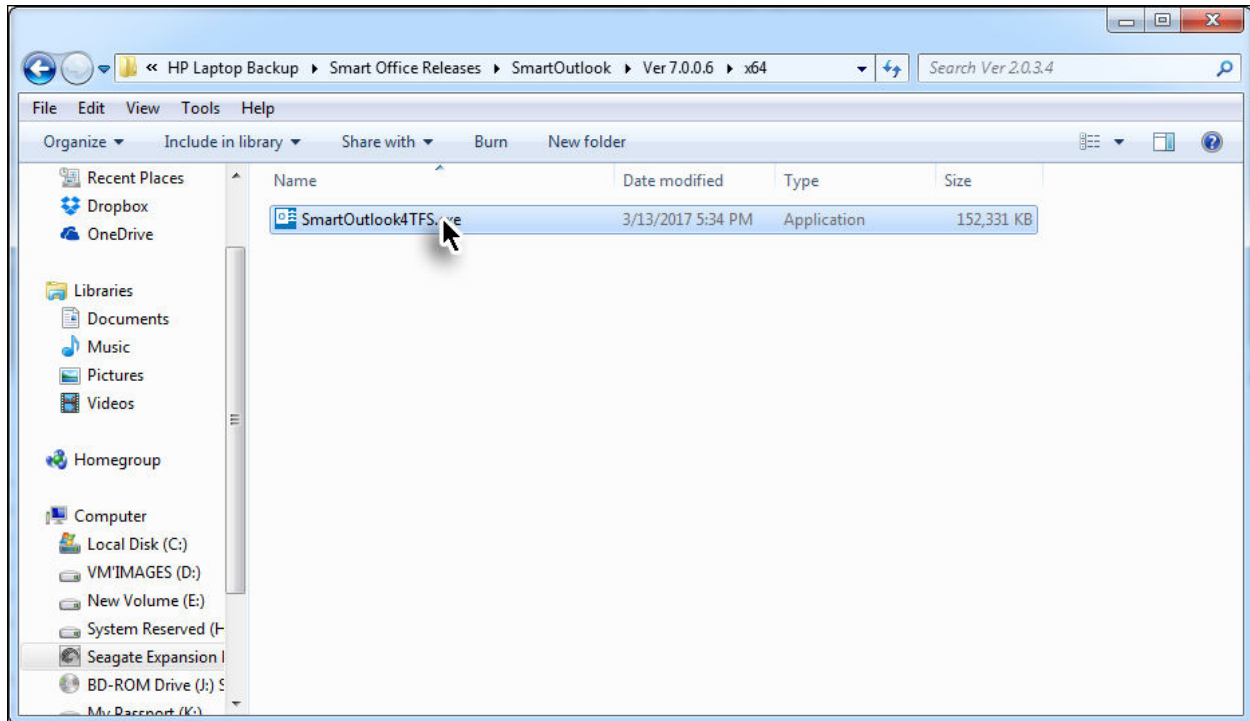
- The Installation files are provided to the users either in 32-bit (x86) or 64-bit (x64) versions depending upon their version of Microsoft Outlook installed (i.e. x86 or x64).
- A 32bit (x86) version of SmartOutlook4TFS cannot be installed on a machine with Microsoft Outlook 64bit (x64) installed on it and vice versa.
- Most of the pre-requisite software tools (Office Interop Assemblies, VSTO and TFS Object Models) are also provided with to the users, in case they do not have them installed on their machines. However User has to get Microsoft Windows and Microsoft Outlook on his own.
- It's better to install the pre-requisite software tools before commencing the installation of SmartOutlook4TFS, however in case they are not installed, the installer for SmartOutlook4TFS automatically installs these tools before starting the installation of SmartOutlook4TFS itself.

### INSTALLATION PROCESS

1. Please make sure that you have Admin rights when installing SmartOutlook4TFS (it is required for installation).
2. Navigate to the desired folder (online or offline) for relevant type of installation.

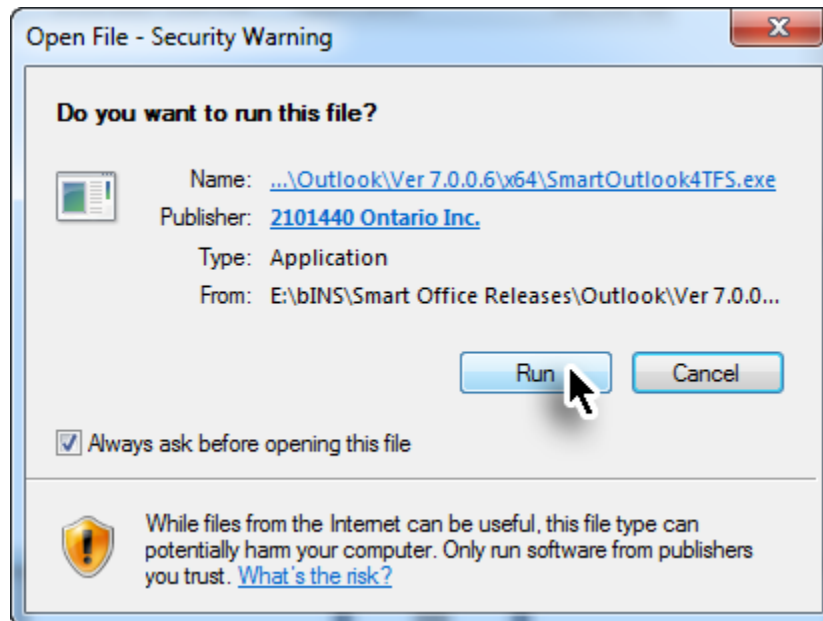


3. Run the **SmartOutlook4TFS.exe** file. (**SmartOutlook4TFS.iso** in case you choose to install through it)

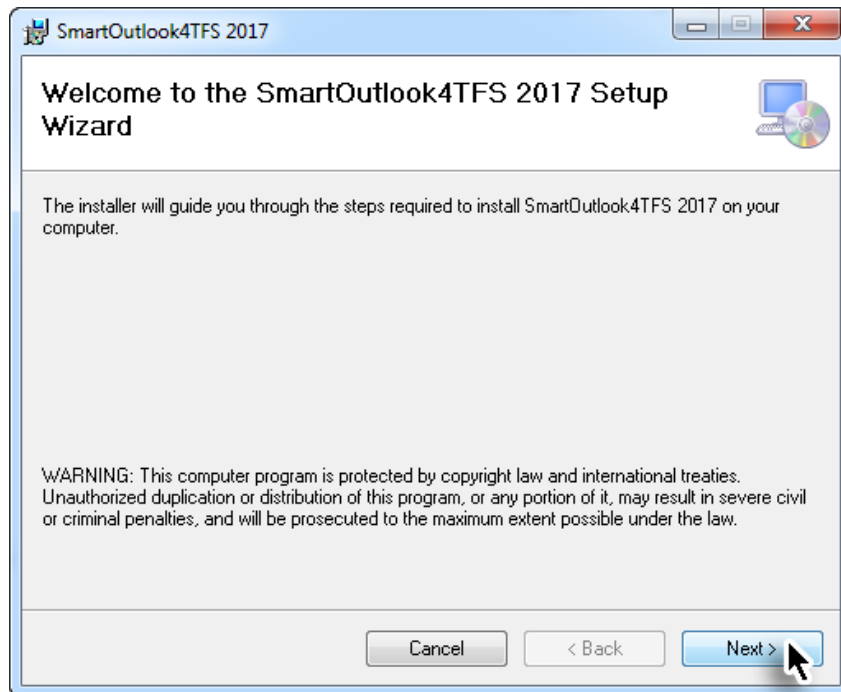


Note: The above screenshot shows the online installer. The ISO file is available as an offline installer

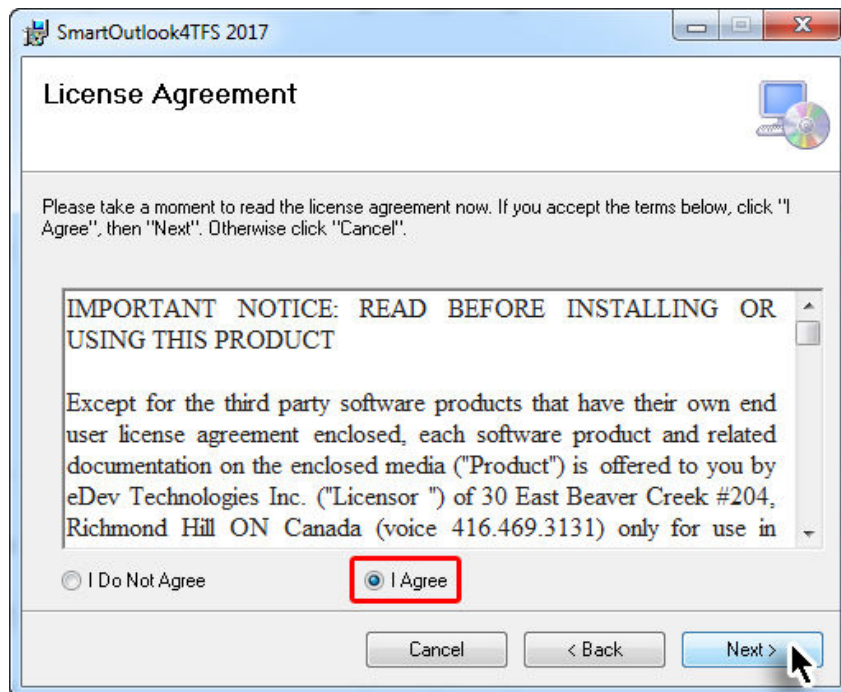
4. Click the **Run** Button.



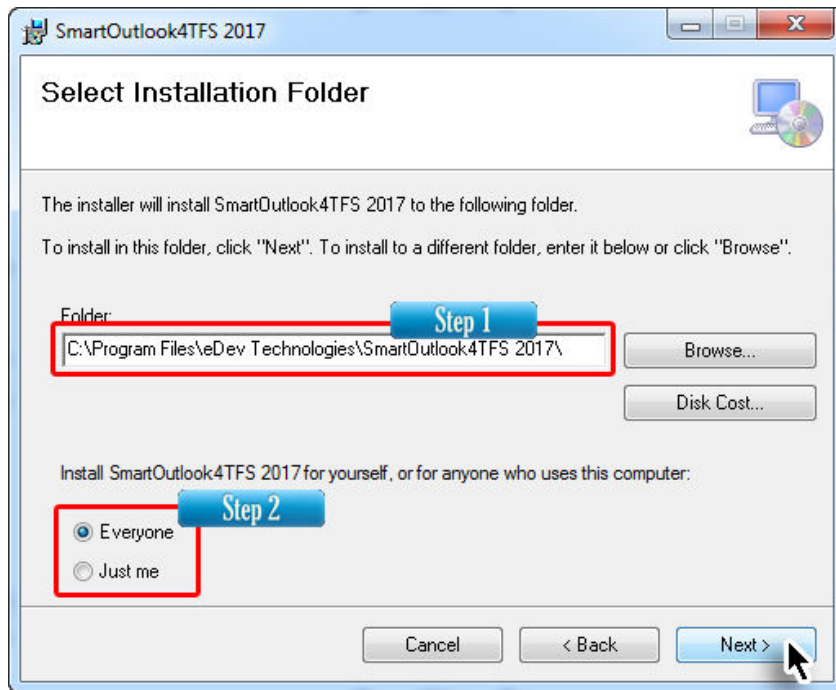
- Click the **Next** Button to start the installation process.



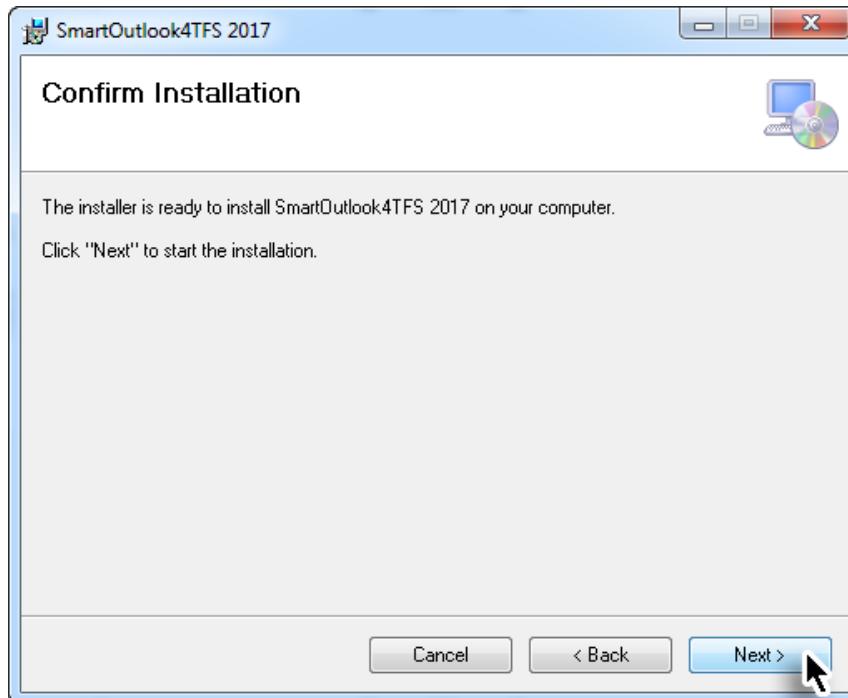
- Read the License Agreement, select **I Agree** option and click the **Next** Button.



7. Set the desired installation location and the relevant user accounts then click the **Next** Button.

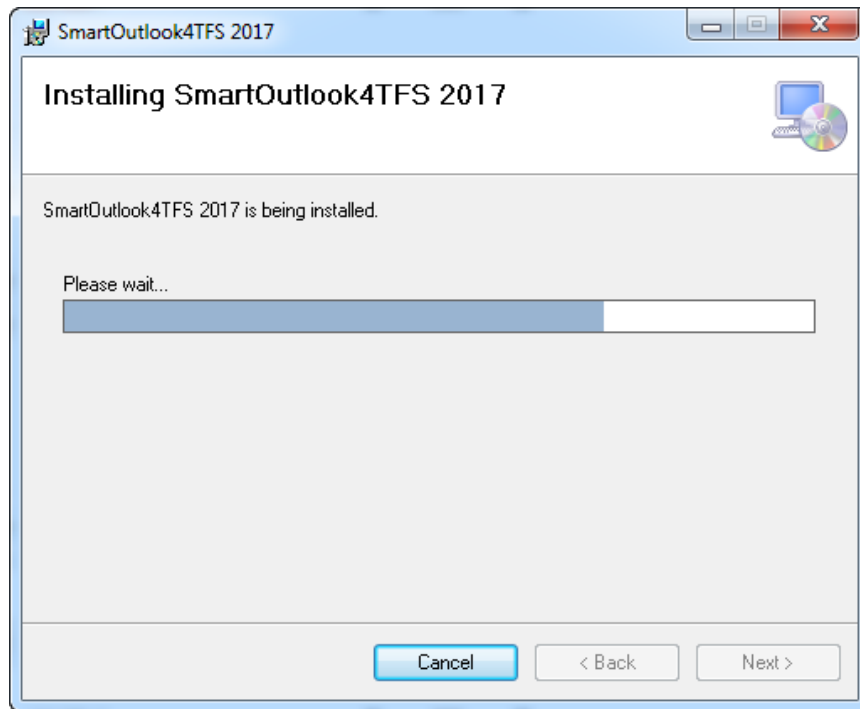


8. Click the **Next** Button to begin the copying of files on your system.

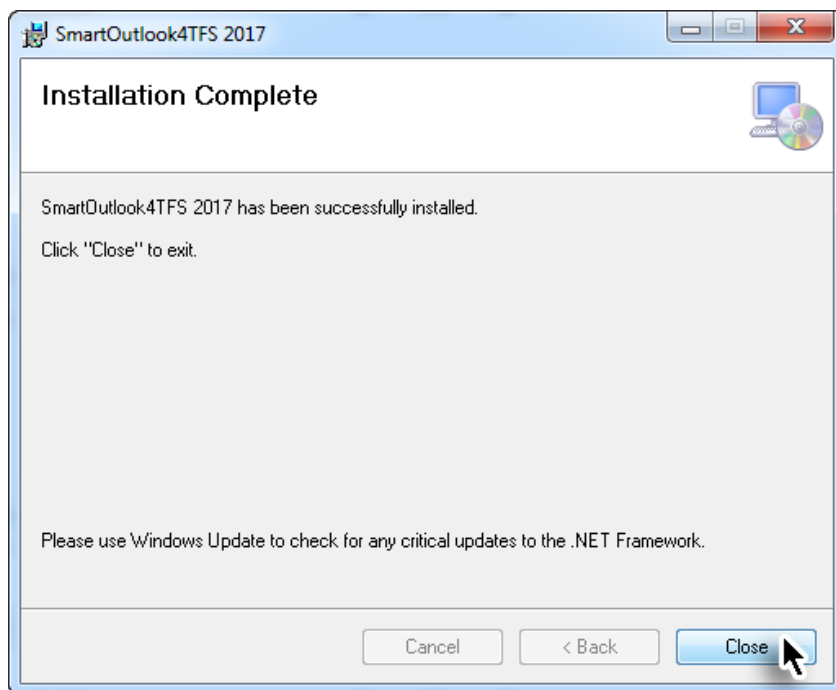




The actual installation starts based on selections done in previous steps.



9. Click on the **Close** Button to complete the installation process.



The **SmartOutlook4TFS** Tab can now be accessed in Microsoft Outlook.

