

# Modern Requirements **4** DevOps

## Impact Assessment

Version 1.0

Installation Guide



REVISION HISTORY				
Rev. #	Date	Details	Revised By	Approved By
Version 1.0	22 <sup>nd</sup> February, 2023	<ul style="list-style-type: none"> <li>Version 1.0 Created</li> </ul>	Syed Hammad	Hammad Masood

## TABLE OF CONTENTS

<b>System Requirements .....</b>	<b>3</b>
General Software Requirements .....	3
Team Foundation Server Requirements .....	3
<b>Impact Assessment Installation .....</b>	<b>4</b>
Impact Assessment Extension Deployment (Azure Services) .....	4
Impact Assessment Installation (Azure Server) .....	6
Binding Information .....	9
Creating/Enabling Extension Maker .....	12
Impact Assessment Extension Deployment .....	16

## SYSTEM REQUIREMENTS

### GENERAL SOFTWARE REQUIREMENTS

1. Operating System: Windows Server 2008 R2 or higher / Windows 7 or higher
2. Browser: Microsoft Edge, Internet Explorer 10 or higher, Chrome, Mozilla Firefox 47.0.1 or higher
3. Screen resolution: 1280 x 960 or higher
4. IIS 7 or higher
5. Microsoft .Net Framework 4.7.2 or higher
6. ASP.NET 4.5
7. Multilingual Support – Language Pack for IE & Save as word.

\*Note: Both the 32-bit and 64-bit versions of the operating systems are supported.

*The credentials required for installing Modern Requirements4DevOps should include administrator rights on the machine. In other words, users installing Modern Requirements4DevOps on their machine should use admin credentials (or credentials that have admin rights) for proper installation.*

*For regular team projects, the user of a machine on which Modern Requirements4DevOps is deployed must have admin rights on the TFS Collection (or added in the application domain in IIS).*

*\*Note: To access GIT-enabled team projects, logged-in domain user of a machine on which Modern Requirements4DevOps is deployed must have authenticated rights on the TFS Collection (or added in Application Domain in IIS).*

*For using Modern Requirements4DevOps on HTTPS the application should be bound with a Trusted CA Signed SSL Certificate and not with a Self-Signed Certificate. Modern Requirements4DevOps is not compatible with the Self-Signed certificate and the user would be unable to proceed with it.*

### TEAM FOUNDATION SERVER REQUIREMENTS

#### ON PREMISES BUILD VERSIONS

Azure DevOps Server 2019 (Update 1 or above)

#### CLOUD BUILD VERSIONS

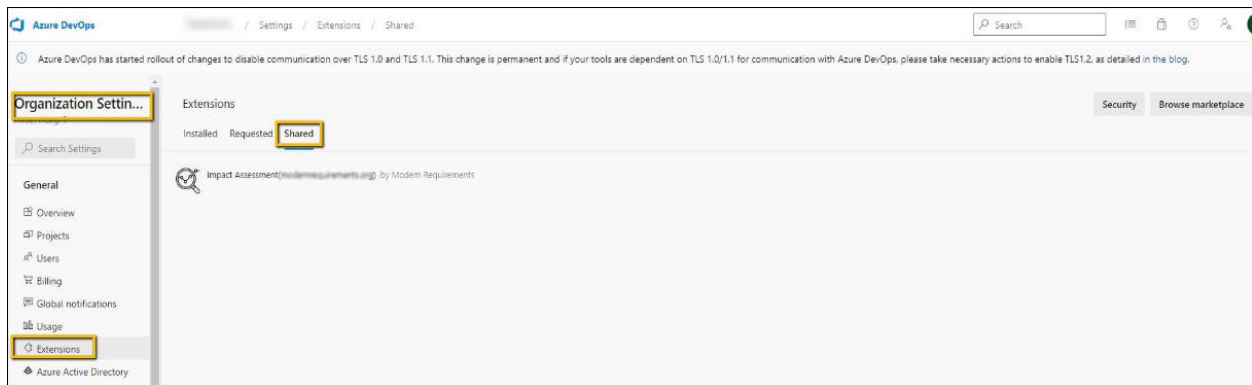
Azure DevOps Services

## IMPACT ASSESSMENT INSTALLATION

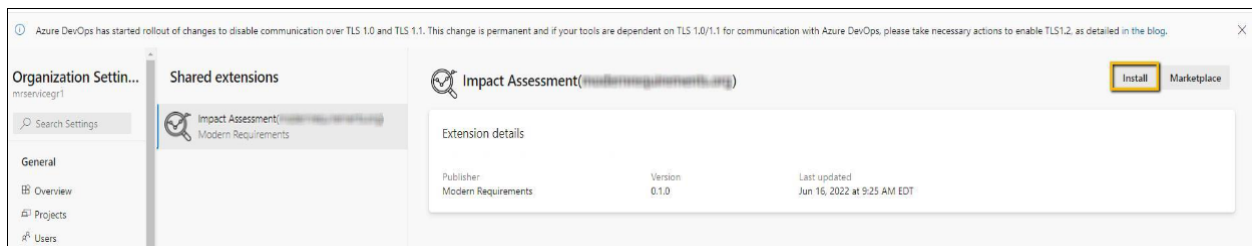
### IMPACT ASSESSMENT EXTENSION DEPLOYMENT (AZURE SERVICES)

In the case of Azure DevOps Services, Impact Assessment extension would be shared to your Azure DevOps (ADO) account. Users can view shared extension(s) on their accounts from the Shared extensions area.

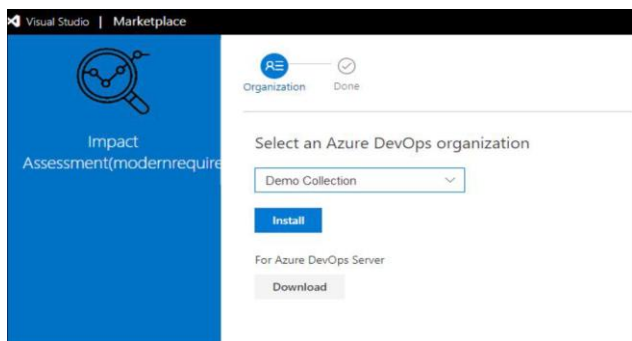
- To do so, the user has to log in to his/her ADO account with administrative privileges and navigate to the Extensions section. Once there, the user has to select the **Shared** tab and click on ReqIF4DevOps (Server Name).



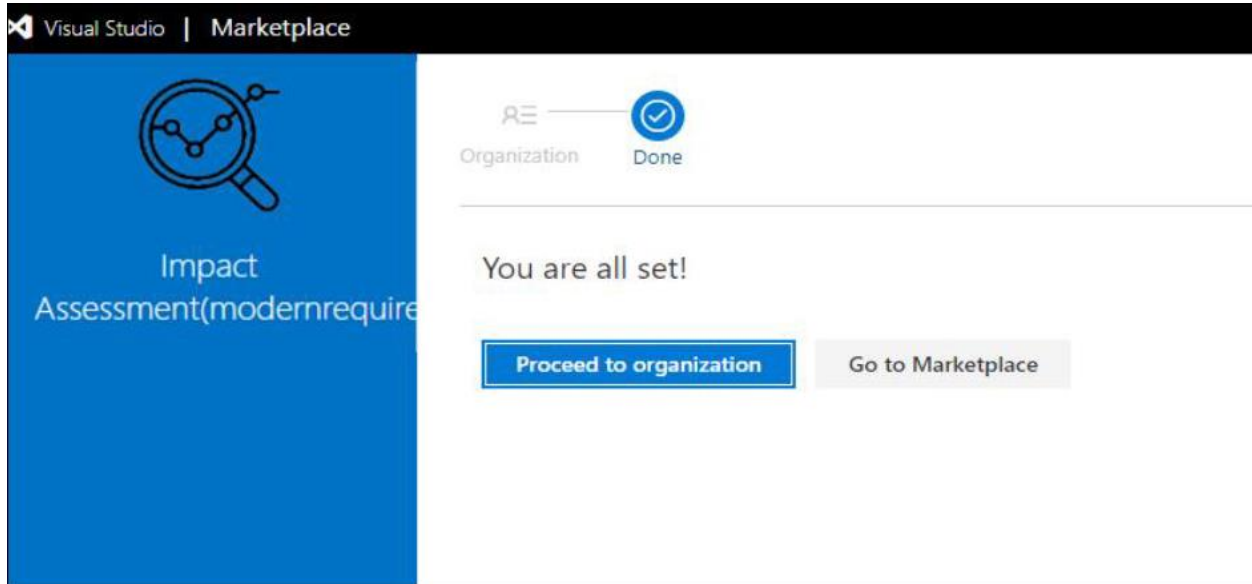
- An installation window will appear. Kindly click on the "Install" button.



- The user will now be navigated to a new window that asks to "Select an Azure DevOps Organization". From the drop-down menu, kindly **select the desired organization** on which Impact Assessment is required to be installed, then press the "Install" button.



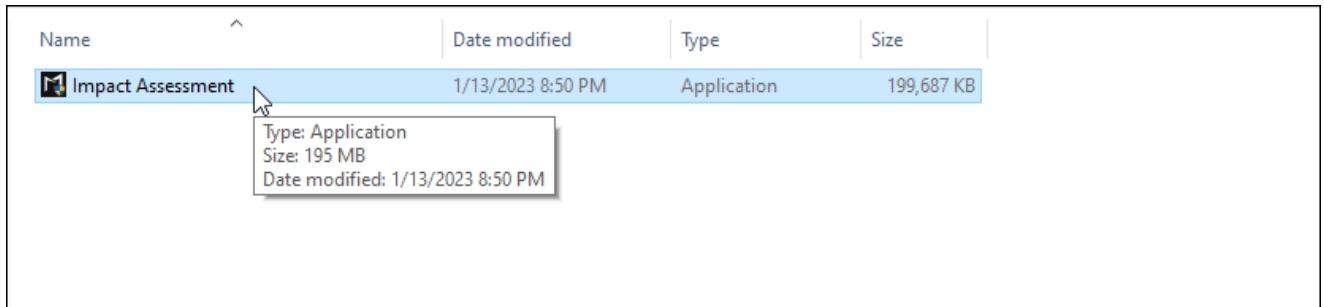
- The Impact Assessment extension will be installed on the selected Organization and a confirmation message will be displayed along with the option to **“Proceed to organization”**.



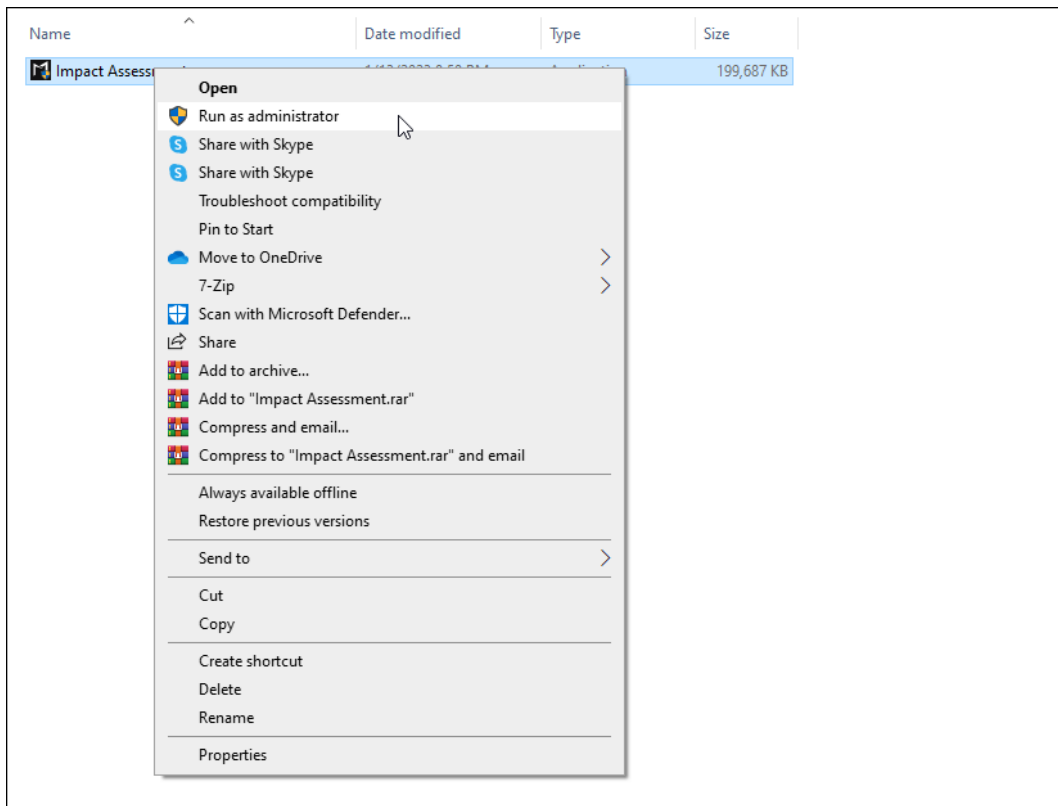
## IMPACT ASSESSMENT INSTALLATION (AZURE SERVER)

The process for installing Impact Assessment is quite simple. Follow the step-by-step guide below.

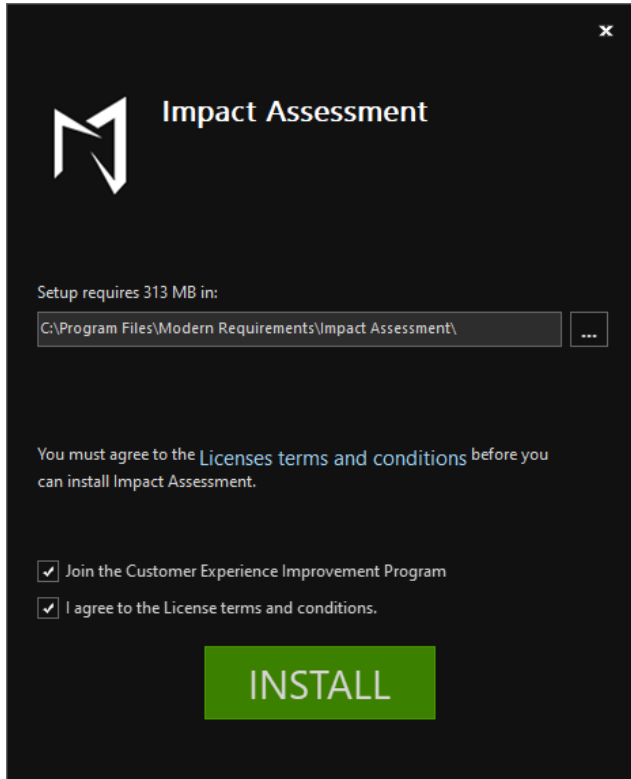
- Right click on the **Impact Assessment.exe** file to start the installation process.



- Select **Run as Administrator**.



- The initial installation screen appears, asking the user to accept the **terms and conditions** for using Impact Assessment. Agree to the T&Cs by selecting the **checkbox** and then click on the **Install** button.

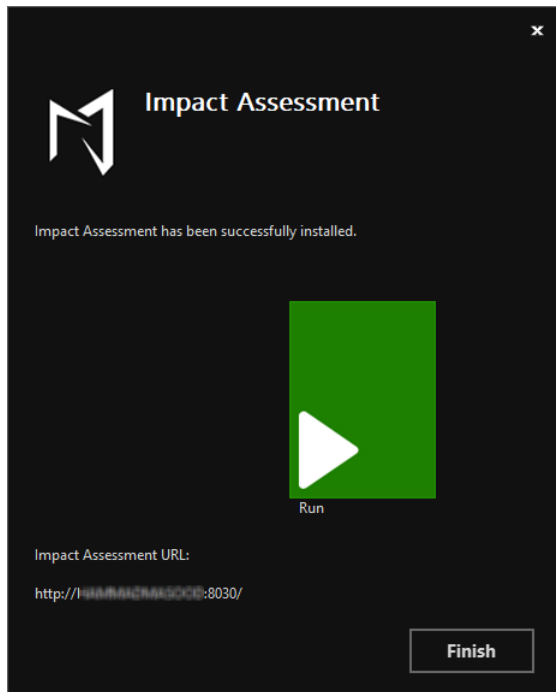


- The Setup Wizard is installing **Impact Assessment**.





- You will see the following screen telling Impact Assessment has been successfully installed. The user can click on the **Finish** button to close the installer.

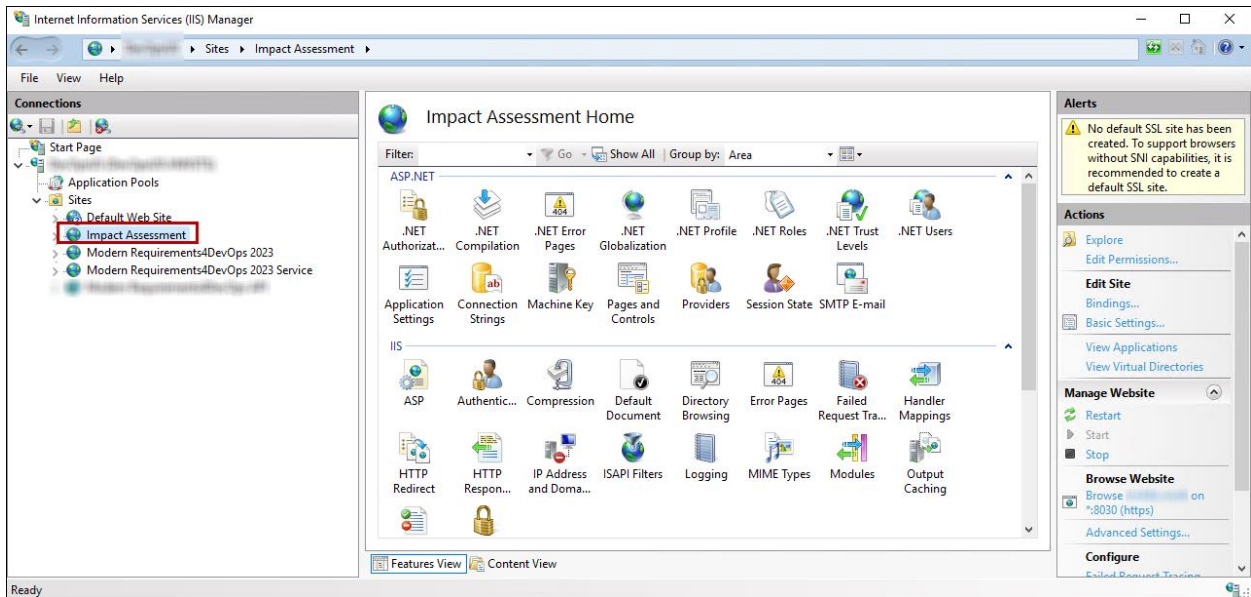


**Note:** The default port for Impact Assessment will be 8030.

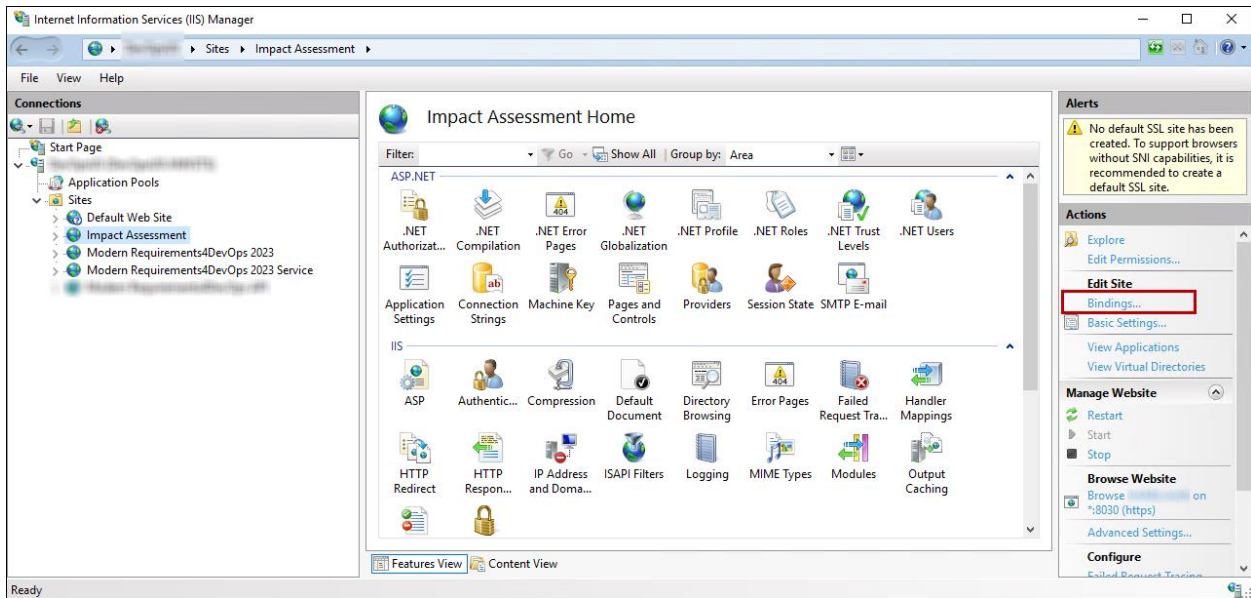
User has to [apply Binding for https](#) and use this same port with valid SSL certificate.

**BINDING INFORMATION**

1. Go to IIS and select “Impact Assessment” site.

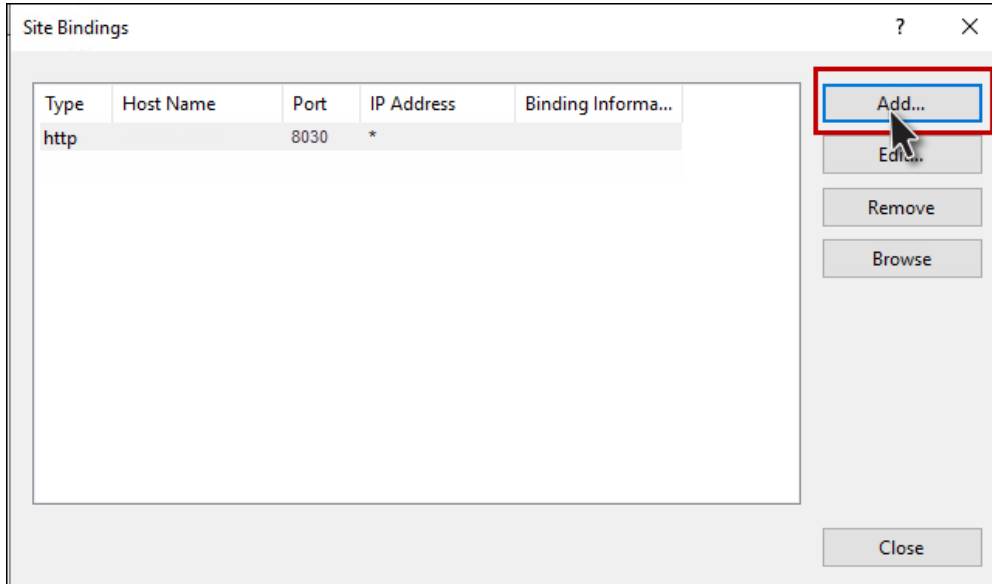


2. Click on Bindings.

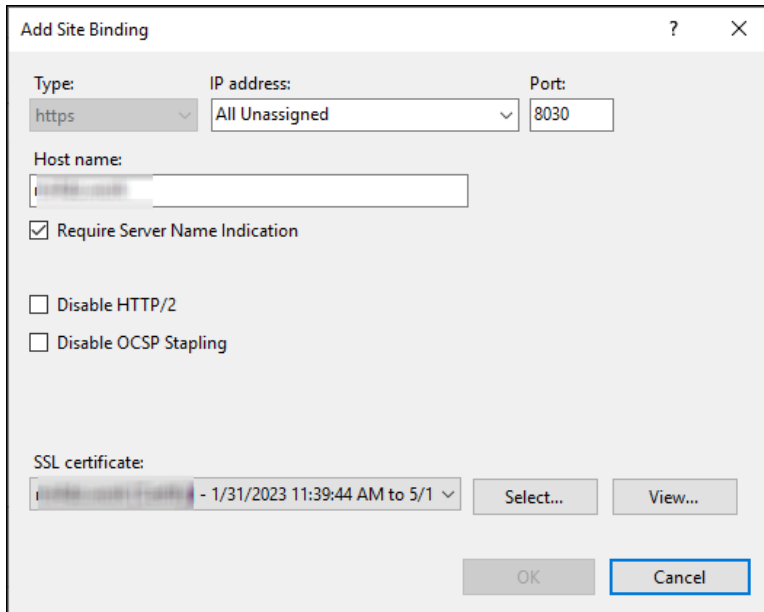


3. A window for **“Site Bindings”** would be displayed now. Click on the **“Add...”** button to create a new Binding information with SSL.

**Note:** The default port for Impact Assessment will be 8030.

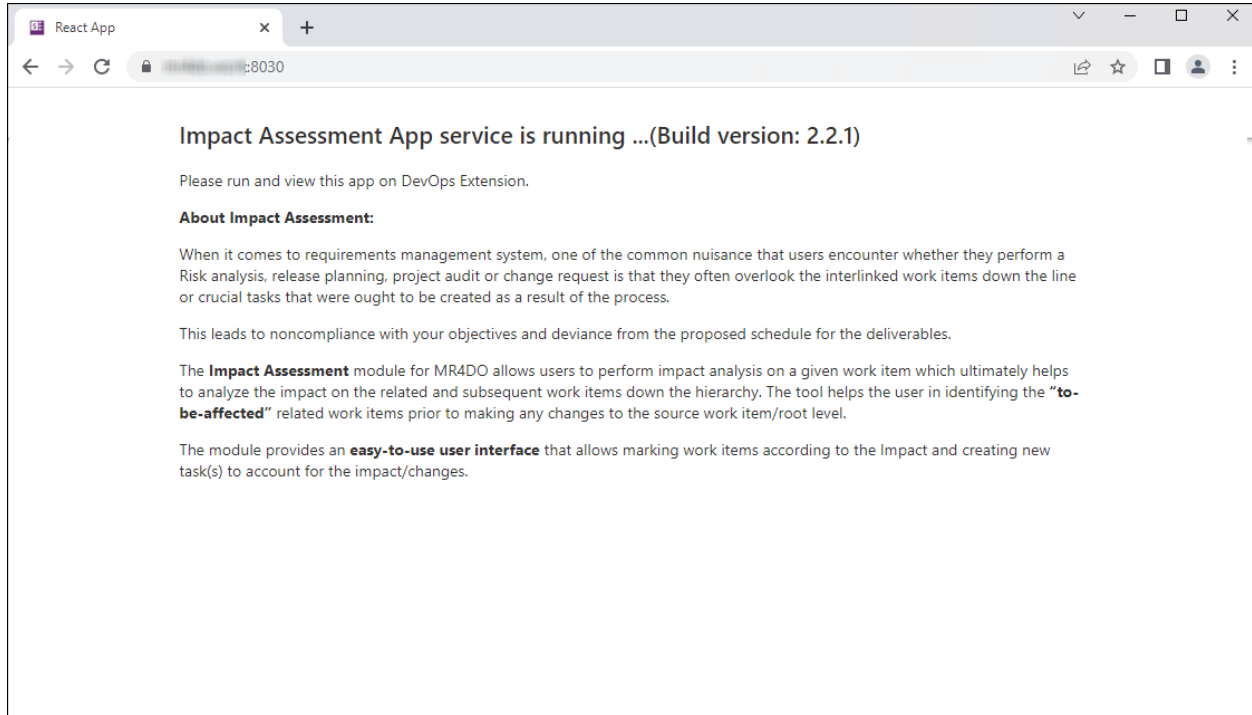


4. Enter the relevant window in the ‘Add Site Binding’ window. In order to use the default port with https, the user has to edit the default Binding (http) and change it to https OR the user can add a custom port as per their requirement, add a valid SSL certificate and click on the **“OK”** button.



5. Once the Binding information has been added in Impact Assessment IIS site, the user is required to open this port from their Server (where the build is being installed).

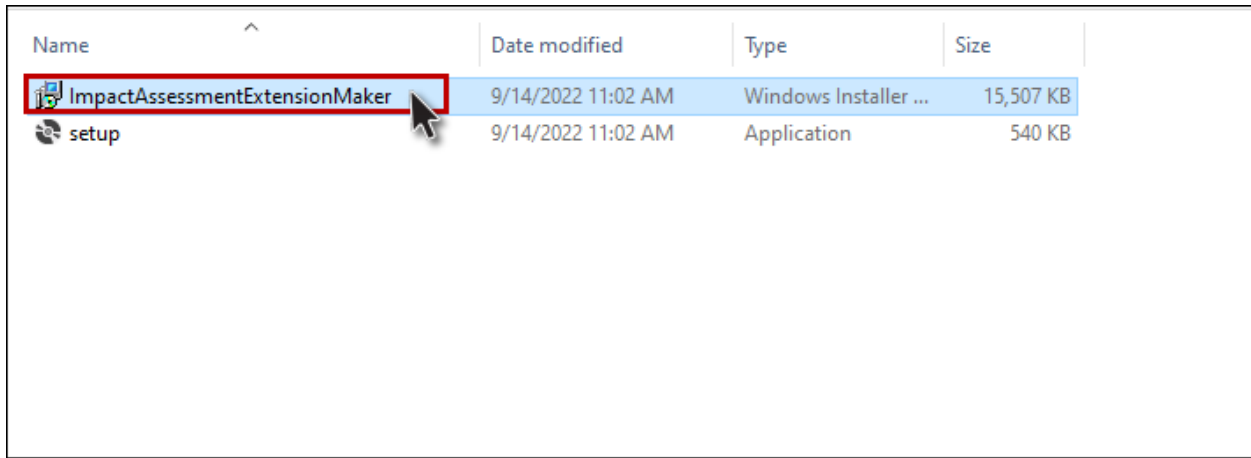
Now browse and verify if Impact Assessment has been configured correctly. If it has been configured rightly, the following page would be displayed.



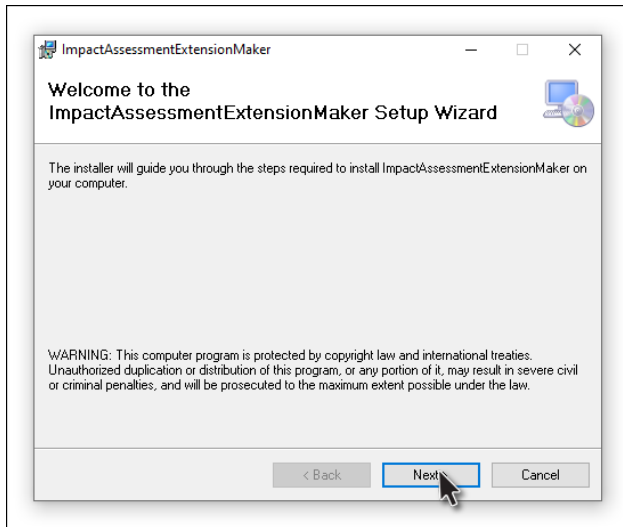
Copy the above URL and create/enable extension from this URL.

**CREATING/ENABLING EXTENSION MAKER**

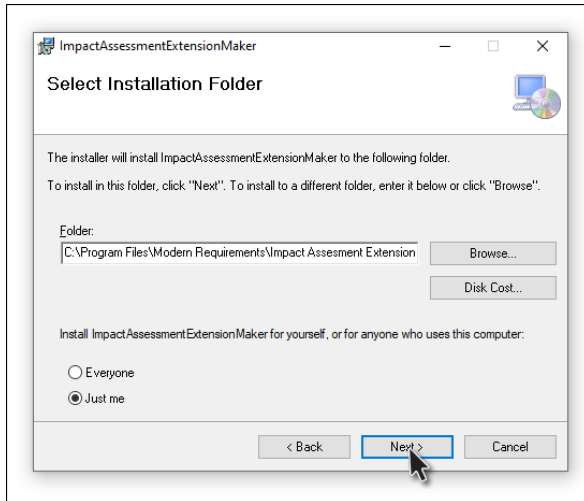
- Navigate to the folder containing the file “ImpactAssessmentExtensionMaker”.



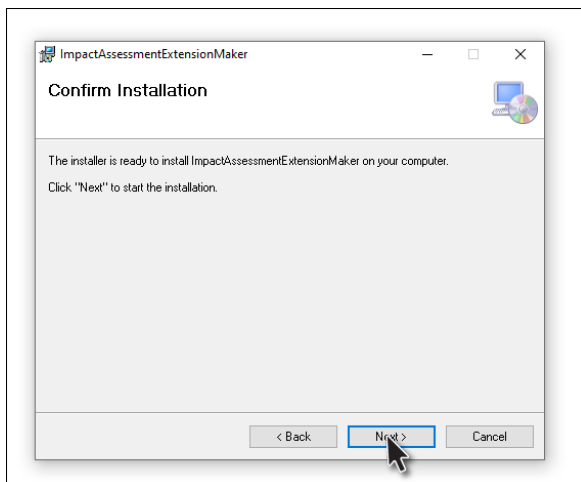
- Click on the “Next” button on the installer.



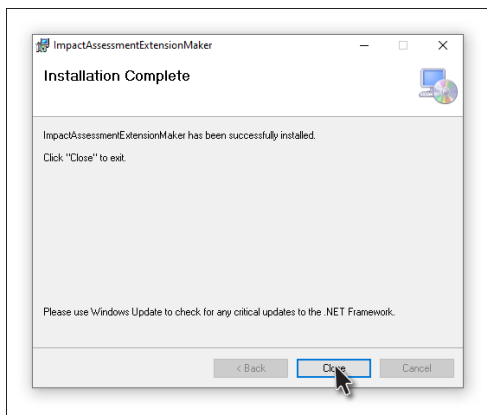
- Select your **desired folder** to install the extension.



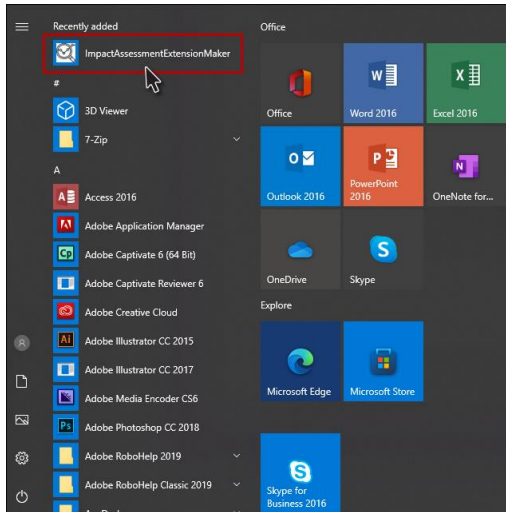
- Click on the **“Next”** button to start the installation.



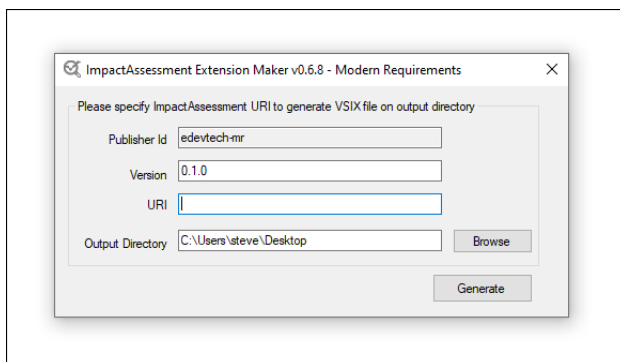
- The **ImpactAssessmentExtensionMaker** has been successfully installed.



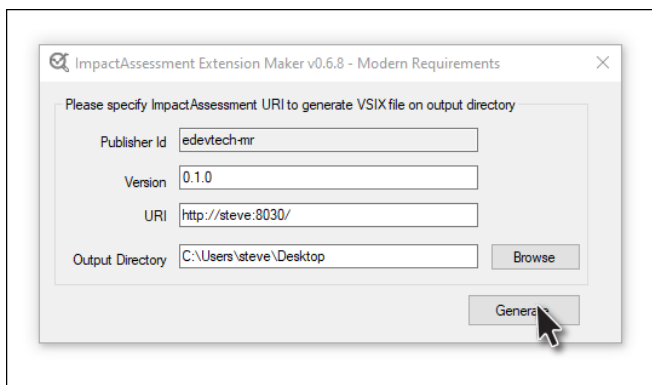
- Go to the start menu and click on “ImpactAssessmentExtensionMaker”.



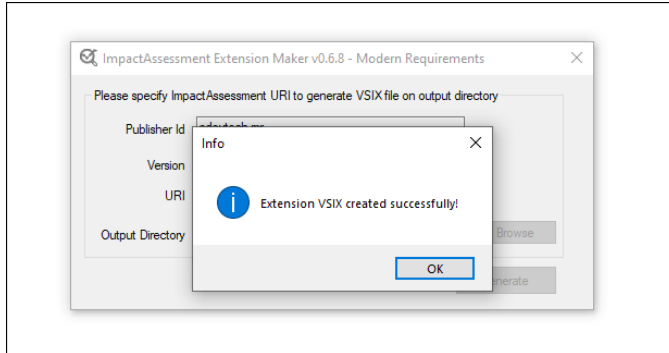
- An **Impact Assessment Extension Maker** window will now open, as shown in the image below.



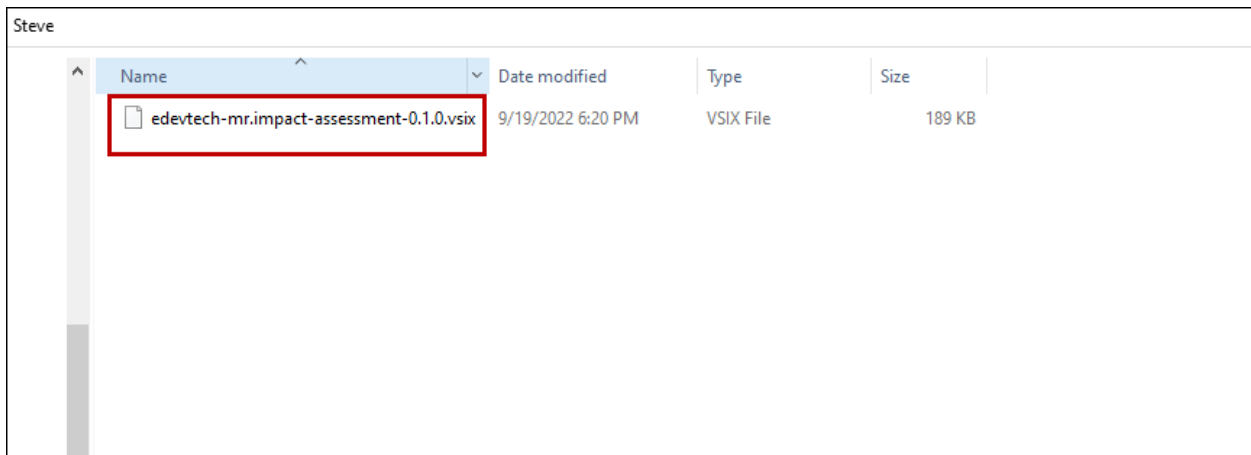
- Provide the required information (i.e., URI and the Output Folder) and click on the **Generate** button. By Default, the Impact Assessment installer installs the build on your machine’s local path utilizing port 8030. If the user not using a secure connection, they can copy this link and create the extension from this URL. However, the majority of the organizations now prefer using **Secure Socket Layer (SSL)**. The extension then, therefore, is required to be created using a secure URL (https) along with the binding info.



- Click the “OK” button to close the confirmation dialogue box.



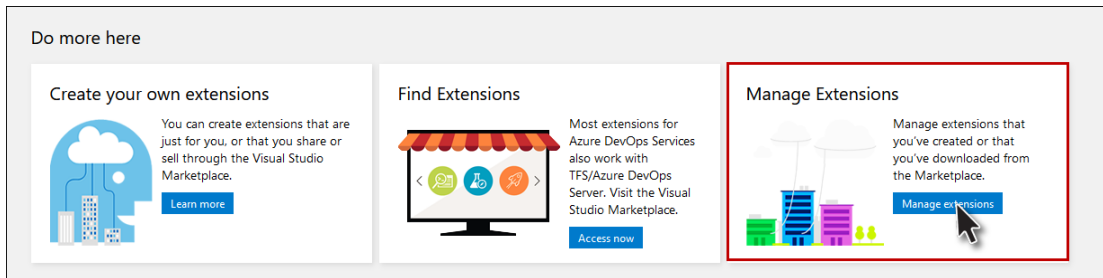
- VSIX File will now be generated at the desired location.



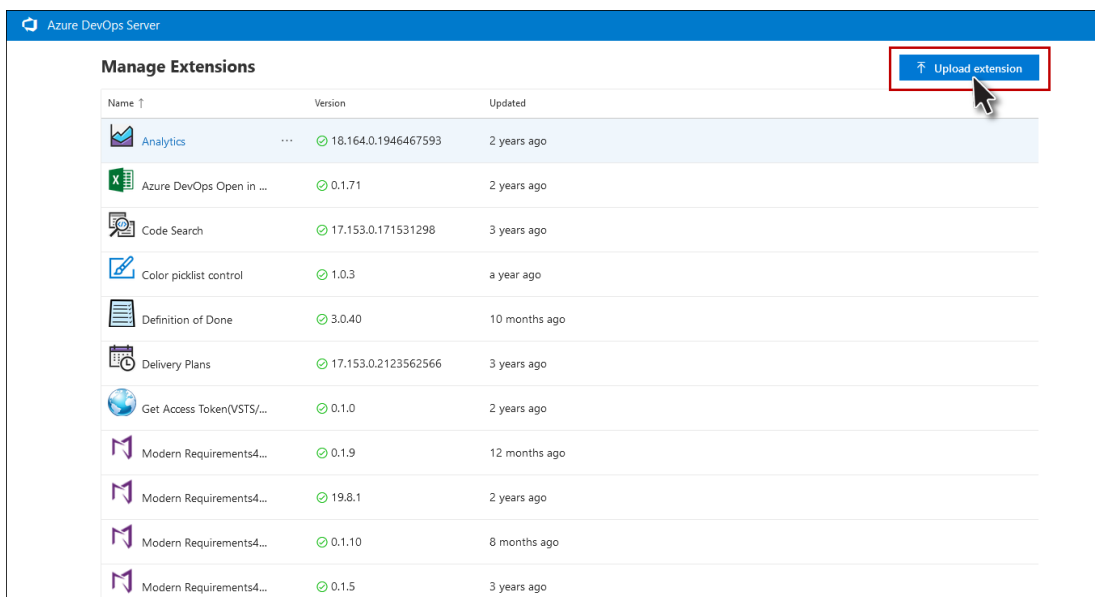


**IMPACT ASSESSMENT EXTENSION DEPLOYMENT**

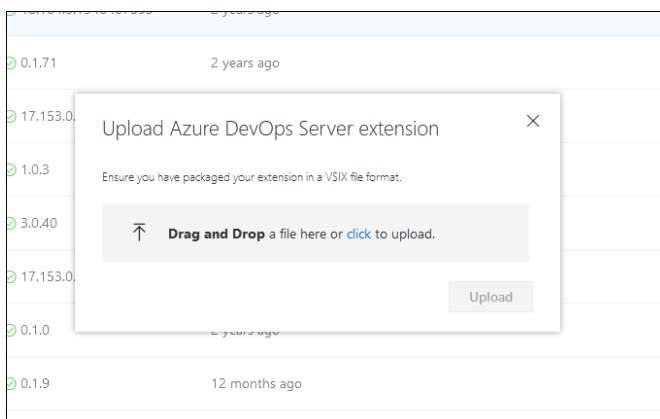
1. Go to Azure DevOps Server Extensions and scroll down to **“Manage Extensions”**.



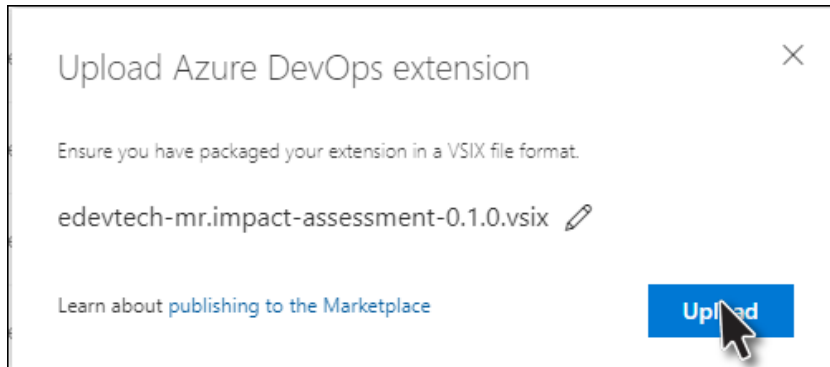
2. Click on the **“Upload Extension”** button on the top right corner.



3. Once you click on the **“Upload Extension”** button, the following pop-up window appears for upload.



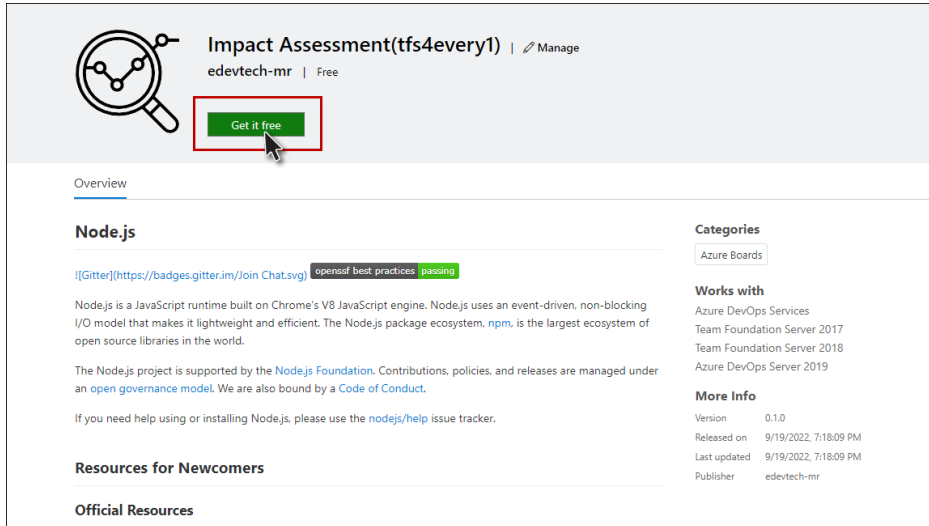
4. Now either **Drag and Drop** or **click** to upload the VSIX file generated using the extension maker. Now click on the **“Upload”** button.



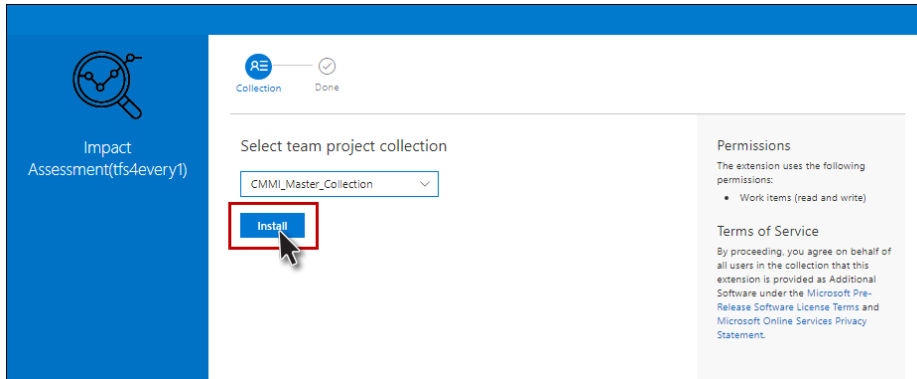
5. **Impact Assessment** will now be displayed in the Manage Extensions list. Click on it to navigate to the View Extension page.

Manage Extensions			<a href="#">Upload extension</a>
Name ↑	Version	Updated	
Analytics	... 18.164.0.1946467593	3 years ago	
Azure DevOps Open in ...	0.1.71	2 years ago	
Clickable Links	1.0.65	a month ago	
Code Search	17.153.0.171531298	3 years ago	
Color picklist control	1.0.3	2 years ago	
Definition of Done	3.0.40	a year ago	
Delivery Plans	17.153.0.2123562566	3 years ago	
Get Access Token(VSTS/...	0.1.0	2 years ago	
Impact Assessment(tf4...	0.1.0	3 minutes ago	
Impact Test App	1.0.23	2 months ago	
Modern Requirements4...	0.1.9	a year ago	
Modern Requirements4...	19.8.1	2 years ago	
Modern Requirements4...	0.1.10	12 months ago	

6. Click on “Get it Free” button.



7. Now select the **collection** on which you want the Impact Assessment extension to be installed and click on the **Install** button.



8. Impact Assessment extension has been **successfully installed** to your desired collection.

